

An aerial photograph of a landscape featuring a large body of water in the foreground and a dense forest in the background. A path or road is visible winding through the forest. The entire image is overlaid with a grid of small, white geometric shapes (squares, triangles, and circles).

# MOLETAI

**EVERYTHING BEGINS HERE**



# **MOLETAI DISTRICT**

**16 873\***

**POPULATION**

**1367 km**

**TERRITORY**

**28,6 %**

**AREAS ARE  
OCCUPIED BY  
FORESTS**

**~ 300**

**LAKES**

\* Information by Lithuanian Department of Statistics

# LITHUANIA AND EUROPE IN MOLETAI

- 1 | ETHNOCOSMOLOGY MUSEUM – THE ONLY MUSEUM OF SUCH CHARACTER IN EUROPE
- 2 | LAKE OF ASVEJA – THE LONGEST LAKE IN LITHUANIA
- 3 | THE ONLY PROFESSIONAL ASTRONOMICAL OBSERVATORY IN LITHUANIA
- 4 | THE SECOND HIGHEST OBSERVATION TOWER IN LITHUANIA
- 5 | LAKE FISHERY MUSEUM – THE ONLY MUSEUM OF SUCH CHARACTER IN LITHUANIA
- 6 | THE VERY FIRST SPECIALIZED GLASS MUSEUM IN LITHUANIA

# MOLETAI IN LITHUANIA

## TO RAILWAY STATIONS

Vilnius – 69 km

Kaunas – 114 km

## TO INTERNATIONAL AIRPORTS

Vilnius – 73 km

Kaunas – 95 km

Palanga – 333 km

Ryga – 271 km

## TO PORTS

Klaipėda – 320 km

Ryga – 263 km



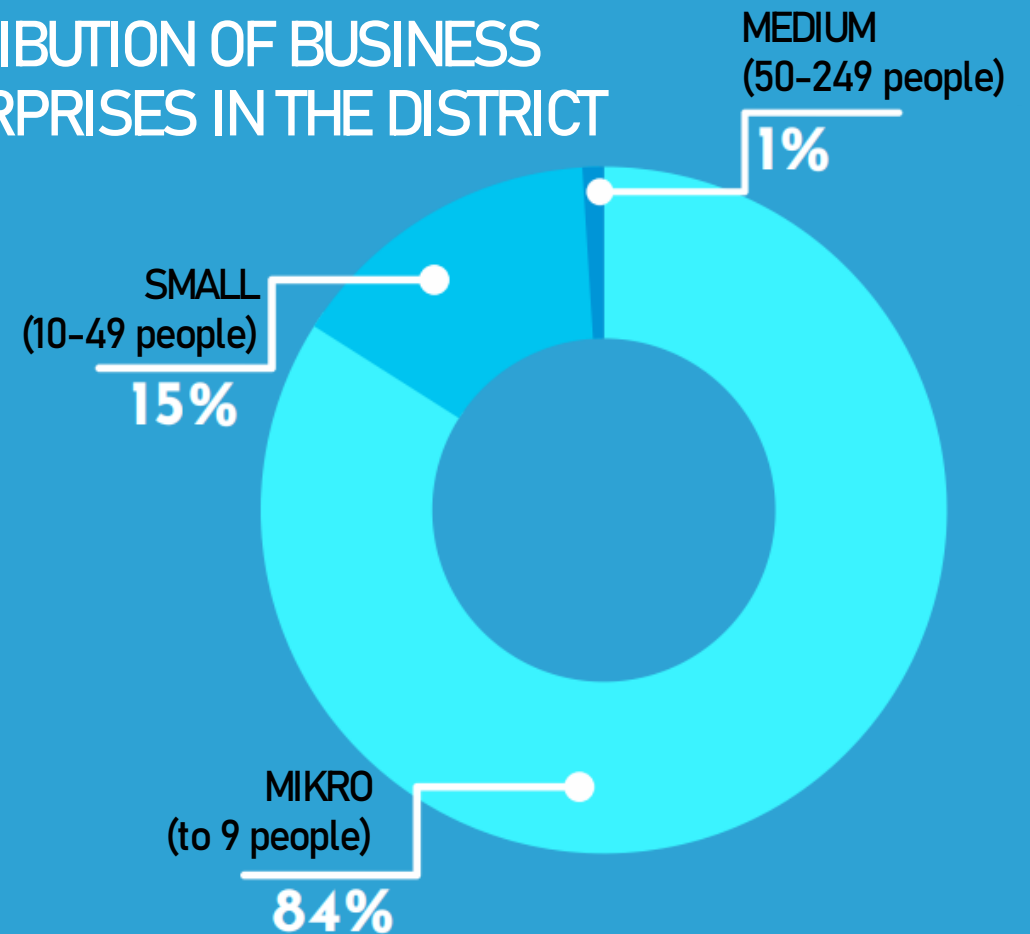
# BUSINESS ENVIRONMENT

FINANCIAL SUPPORT FOR SMALL AND MEDIUM SIZED BUSINESSES PROVIDED BY MOLÉTAI DISTRICT MUNICIPALITY

ACCOMMODATED TOURISTS IN MOLÉTAI DISTRICT MADE **37%**

OF ALL TOURISTS THAT STAYED IN UTENA COUNTY IN 2020

DISTRIBUTION OF BUSINESS ENTERPRISES IN THE DISTRICT



# INVESTING IN MOLĖTAI

REAL ESTATE TAX  
IN DISTRICT **0,5%**  
(country average – 0,7%)

LAND TAX **1–3%**  
of average market value

## AVERAGE MONTHLY SALARY IN MOLĖTAI DISTRICT (PRIE-TAX), EUR\*

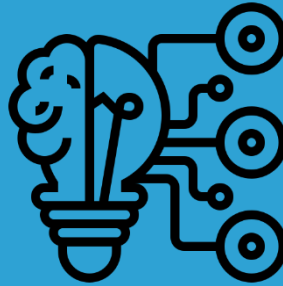


\* Information by Lithuanian Department of Statistics

# KEY SECTORS



ECO INDUSTRY



INNOVATIONS



TOURISM









# **IMPLEMENTED AND ONGOING PROJECTS**





MOLĖTAI  
SWIMMING POOL  
Ongoing



An aerial photograph of a town, likely Molėtai, showing a mix of residential and industrial areas. In the foreground, there's a large green field with several rectangular solar panel arrays. A tall, thin water tower stands prominently in the middle ground. To the right, there are rows of long, low buildings, possibly a school or a large residential complex. The background shows a dense residential area with many houses and a church spire visible in the distance. A semi-transparent blue box with white text is overlaid on the left side of the image.

# CREATING AN IMPORTANT ENGINEERING INFRASTRUCTURE FOR BUSINESS IN MOLETAI ABANDONED TERRITORIES

Ongoing





RENOVATING THE CENTRAL PART OF  
THE TOWN OF MOLĖTAI (1st STAGE)

Implemented





# RECONSTRUCTION OF THE BUILDING OF CULTURAL INSTITUTIONS (LIBRARY, MUSEUM, CULTURAL CENTER)

Implemented





# SERVICES DEVELOPMENT OF LITHUANIAN MUSEUM OF ETHNOCOSMOLOGY

Implemented



# OPEN PUBLIC SPACES INFRASTRUCTURE DEVELOPMENT IN TOWN

Implemented







LIGONIUK

TADA, KAI BIAU

PSD




Nenutrūkstamas privačiosios sveikatos draudimas garantuojantis apmokėtą sveikatos priežiūrą

RENOVATING CENTRAL PART OF  
THE TOWN OF MOLĖTAI (2nd STAGE)

Implemented



An aerial photograph of a residential neighborhood. In the foreground, there are several modern, multi-story apartment buildings with white facades and orange accents, featuring dark grey roofs. A paved road with a crosswalk runs through the center. To the left, a sandy playground with colorful equipment is visible. The background shows a mix of older houses and more greenery, with a church spire visible in the far distance. A semi-transparent blue box with white text is overlaid on the top left.

# RECONSTRUCTION OF PUBLIC INFRASTRUCTURE IN JANONIO STR. RESIDENTIAL AREA

Implemented





**MOLĖTAI DISTRICT  
MANUCIPALITY  
ADMINISTRATION**

Vilnius str. 44, Molėtai LT-33140  
[savivaldybe@moletai.lt](mailto:savivaldybe@moletai.lt)

**MOLĖTŲ TOURISM AND  
BUSINESS INFORMATION  
CENTRE**

Inturkė str. 4, Molėtai LT-33141  
[tvic@infomoletai.lt](mailto:tvic@infomoletai.lt)